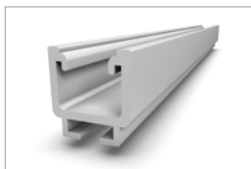
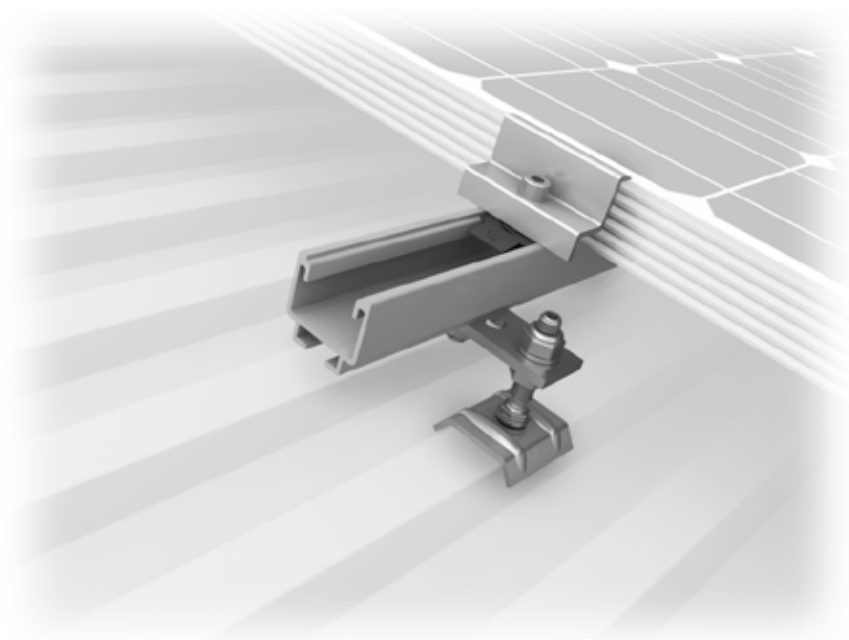


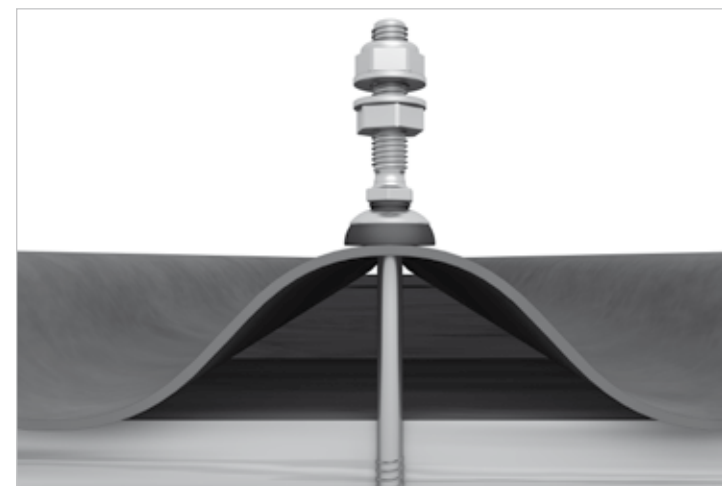
Mounting systems for solar technology



K2 SYSTEMS
SLOPED ROOF SYSTEMS
SOLAR FASTENER

SOLAR FASTENER SYSTEM

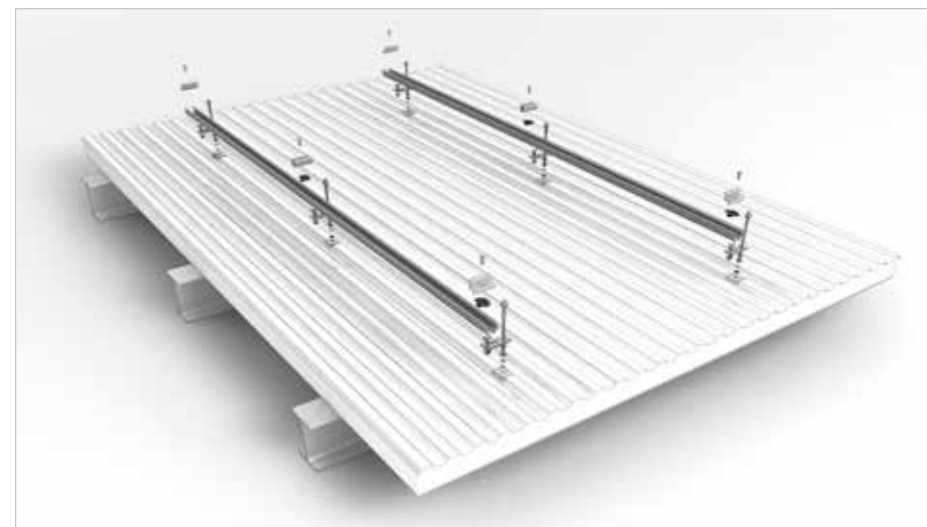
- For roofs with steel or aluminium profile or fibre cement roofing
- Screw head with hexagon drive allows for assembly with electric screwdriver
- Extra-long metric thread for height adjustment
- Assembly using K2 adapter plate
- Elongated hole enables easy connection by T-bolt to the K2 Solid Rail
- All components made of high-quality stainless steel and aluminium, sealing element made of high quality EPDM
- Greater span widths possible by mounting with K2 Bridge
- Includes technical approval
- Modular structure suitable for any system size



Detail: Solar fastener with FZD seal

Technical data

Field of application	Sloped roof
Roofing	Roofs with steel or aluminium profile or fibre cement covering with steel sub-structure
PV modules	Suitable for all standard module types
Module orientation	Vertical / horizontal (with cross bracing)
Material	Stainless steel 1.4301
Connecting elements	Stainless steel A2-70, sealing made from EPDM
Roof connection	Screw connection
Static principles	Technical approval Z-14.4-532, Determination of load capacity values by independent test institutes
Load assumption in accordance with	DIN EN 1991 (Eurocode 1)
System components	Solar fasteners, K2 SolidRail or K2 CrossRail family, mid and end clamp sets, K2 Bridge, K2 Climber, T-bolts, M K2



System Explosion drawing



Novatech | Michelfeld-Erlin - Germany
System: 1,4 MW | Solar fastener System



Elpo | Brixen - Italy
System: 88,83 kW | Solar fastener System

SERVICE-HOTLINE
+49 (0)7152 3560-0
www.k2-systems.com

Product Sheet Solar Fastener | GB3 | 0413 | Subject to change
Product illustrations are exemplary illustrations and may differ from the original.

