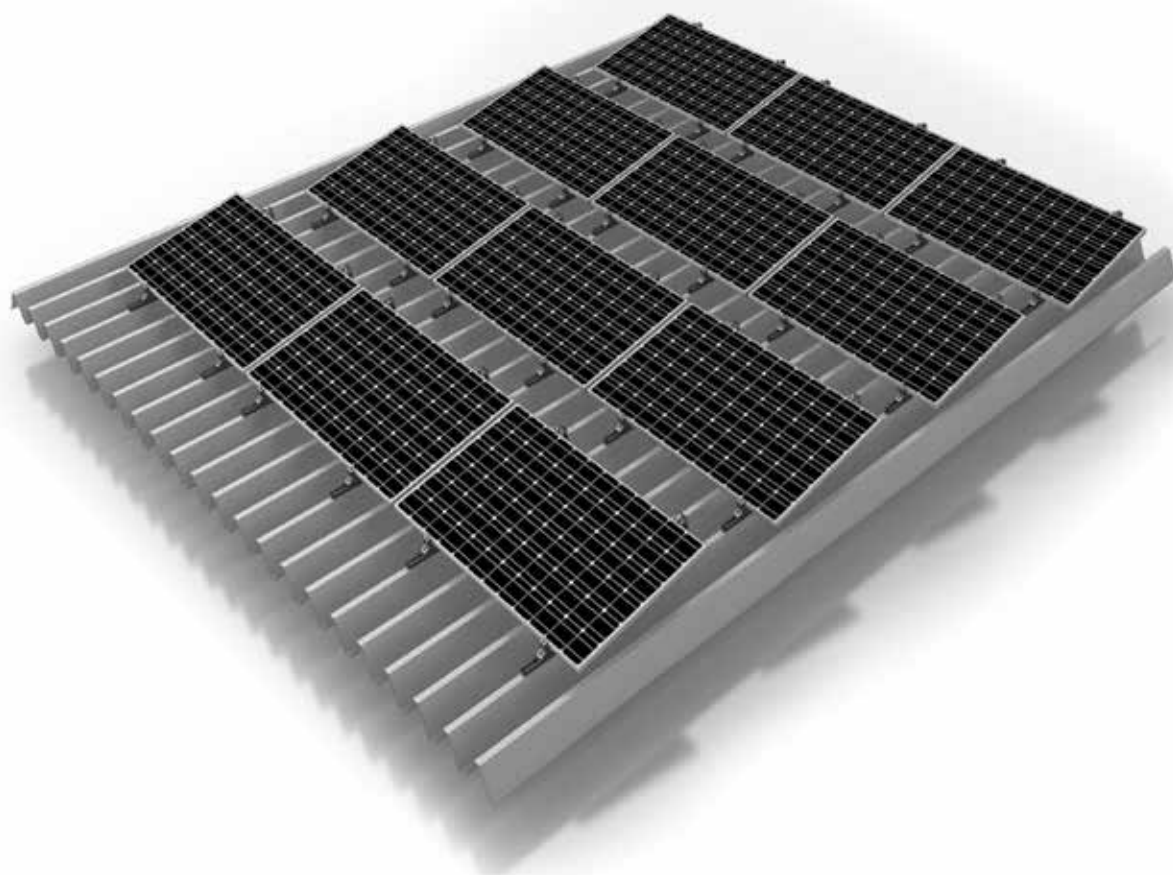


Mounting systems for solar technology



ASSEMBLY INSTRUCTIONS
S-DOME SMALL SYSTEM

GB

TABLE OF CONTENTS

TABLE OF CONTENTS	2
THE COMPANY	3
SAFETY REGULATIONS	4
MATERIALS REQUIRED	5
TOOLS REQUIRED	7
ASSEMBLY	8

PARTNER WITH A SYSTEM

With sophisticated, fully developed product ideas and obvious customer-orientation, K2 Systems is your friendly partner in the field of mounting systems for solar technology. International customers appreciate the tried and tested designs for use on roofs and in outdoor and individual solutions.

Mounting systems from K2 Systems impress with their attractive design and many well thought-out details. High grade materials and quality workmanship guarantee outstanding functionality and durability.

Our products consist of few yet perfectly matching components - this reduces the amount of material used, simplifies assembly while saving time and money.

As an energetic, experienced company, and in keeping with the times, we benefit from cooperation as partners in order to ensure the dynamic development of our company. The experiences from the personal dialogue with our customers forms the basis for permanent optimisation of our range of products. The team of K2 Systems looks forward to a successful cooperation with you.

TESTED QUALITY – FOUR CERTIFICATIONS

K2 Systems stands for secure connection, highest quality and precision. Our customers and business partners have already known that for a long time. And three independent institutes have tested, confirmed and certified our capabilities and components.



GENERAL SAFETY INSTRUCTIONS

Please be aware that our General Assembly Regulations must be adhered to.








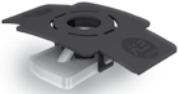
They can be viewed under www.k2-systems.com/en/downloads/product-information.html

In general, the following applies:

- Systems may only be installed and put into use by people who can ensure the proper carrying-out of the work due to their technical suitability (e.g. training or occupation) and/or experience.
- Before assembly, it must be checked that the product meets the local static requirements. For roof systems, the load-bearing capacity of the roof has to be checked in principle.
- National and local building regulations, standards and environmental regulations are always to be adhered to.
- Work safety and accident prevention regulations and corresponding standards and regulations of occupational associations are to be adhered to! In particular, it is to be ensured that:
 - Safety clothing is worn (especially safety helmets, work shoes and gloves).
 - For work on roofs, the regulations for working on roofs are to be adhered to (e.g. use of anti-fall guards, scaffolding with arrestor equipment from an eaves height of 3m etc.)
 - Presence of two people is vital for the entire course of the assembly, so that swift help can be ensured in the case of an accident.
- K2 mounting systems are constantly being developed further. Because of this, assembly procedures can change. Therefore, before assembly, always check that the assembly instructions are up-to-date under www.k2-systems.com/en/downloads/product-information.html. We can also send you the latest version on request.
- The assembly instructions of the module manufacturer are to be adhered to.
- Earthing must be ensured, use lightning arrestor clamp if necessary.
- During the entire assembly time it is to be ensured that at least one copy of the assembly instructions is available on site.
- In the event of non-adherence to our General Safety Instructions and if competitor's parts are built in or attached, K2 Systems GmbH reserves the right to refuse liability.
- With disregarding our general installation and assembly instructions and not using all system components and assemblies according to these instructions as well when components are used, which were not obtained from us, K2 Systems is not liable for any resulting defects and damages. Warranty is excluded in such cases.
- If all safety instructions are adhered to and the system is correctly installed, there is a product warranty entitlement of 12 years! Please read out Terms and Conditions of Warranty which can be viewed under www.k2-systems.com/en/downloads/product-information.html. We can also send them to you on request.
- The dismantling of the system takes place according to the assembly steps, in reverse order.
- K2 components made of stainless steels are available in different corrosion resistance classes. In every case, the expected corrosion exposure of each structure or component must be checked.

ESSENTIAL: THE MATERIALS REQUIRED

In order to install the K2 Systems S-Dome small installation system, the following listed system components are essential. The item quantities are calculated on the basis of the respective requirements. The listed item numbers facilitate the comparison of items.

	<p>MultiRail 25; 250 mm 2001301</p> <p>Material: Aluminium EN AW-6063 T66</p>
	<p>K2 Dome SD small 2000774</p> <p>Material: Aluminium EN AW-6063 T66</p>
	<p>K2 Dome S1000 small 2000775</p> <p>Material: Aluminium EN AW-6063 T66</p>
	<p>K2 FlexClamp small 2000773</p> <p>Material: Aluminium EN AW-6063 T66, Stainless steel</p>
	<p>K2 Self-tapping screw 6 x 36 1001622</p> <p>Material: Stainless steel, Jointing: EPDM, WS 8 mm 1006039</p> <p>Alternative: Self-tapping moulded screw 6 x 38 Material: Stainless steel, EPDM, WW 8</p>
	<p>Allen Bolt DIN 912 EN ISO 4762 M8 item number system-specific</p> <p>Material: stainless steel</p>
	<p>Washer 1000473</p> <p>Material: stainless steel</p>
	<p>M K2 slot nut with clip 1001643</p> <p>Material: stainless steel, plastic</p>

AT A GLANCE: OVERVIEW OF THE TOOLS

K2 Systems mounting systems are designed to ensure effortless assembly. The required tools are not included in the scope of supply. Here we have listed them together for ease of reference.



Torque wrench

With attachment for SW 6, SW 13



Measuring tape



Cordless screwdriver

With attachment for T-40



Angle grinder

IN GENERAL:

Please carefully read through all the steps first to ensure safe and correct assembly of the system. The required material is listed for each step. Should you have any problems during assembly or questions relating to the system please contact us on our

SERVICE HOTLINE: +49 (0) 7152-3560-0

IMPORTANT:

- The grounding must be prepared on site and carried out in accordance to the respective national regulations.
- If the the trapezoidal sheet is fixed with calottes, never connect the MultiRail directly with the calottes
- The General Installation Instructions must be adhered to.
These can be found at: www.k2-systems.com/en/downloads/product-information.html
- This system can be installed on all standard flat roofs with pressure-resistant substrates and a roof pitch of up to 5 degrees. The elevation angle is 10°.
- Minimum distance to roof edge: 500 mm.
- The K2 S Dome S1000 system is suitable for modules with a frame height of 34 - 50 mm.
This system is not suitable for thin-film modules.
- Modules with an area of up to flat of 2m² and a width of 950 to 1050 mm can be used.

INSTALLATION S-DOME SMALL SYSTEM: STEP BY STEP

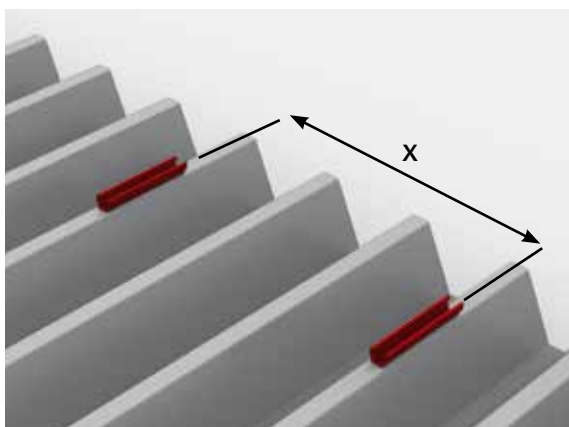
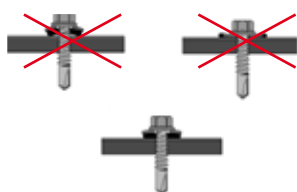


1
of 8

MOUNTING THE MULTIRAIL

Use two self-tapping screws to fasten the MultiRail rail to the center of the crest. Minimum width of the crest: 22mm. The EPDM seal under the rail may be compressed to a maximum of 50%. The seal of the screw should not be too tightly compressed.

Materials required: K2 MultiRail 25, self-tapping sheet-metal screws



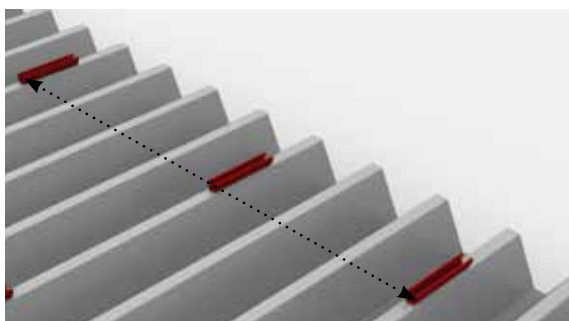
2
of 8

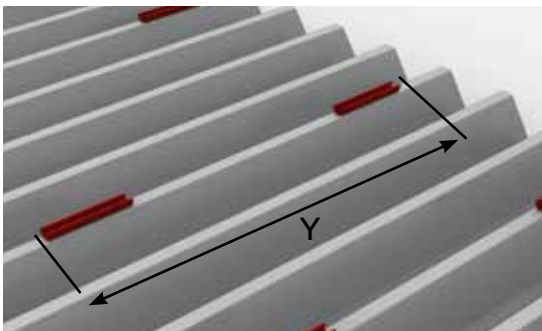
MEASURING THE RAILS

The horizontal spacing X of the MultiRail rails is defined by the dimensions of the modules and their maximum clamping range. As a rule the recommended spacing is half the length of the module. In individual cases the assembly instructions of the modules must be followed with respect to the clamping range.

Use a chalk line to align the rails in a row.

Materials required: K2 MultiRail 25, self-tapping sheet-metal screws





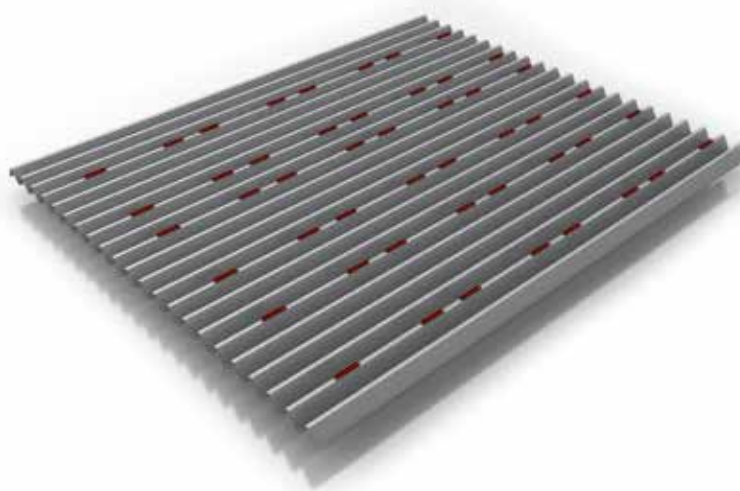
3
of 8

MEASURING AND FASTENING THE OTHER RAILS

The vertical spacing Y of one row of rails is approx. the width of the module +60 mm.

Repeat steps 1 and 2 to assemble the other rows.

Materials required: K2 MultiRail 25, self-tapping sheet-metal screws



4
of 8

ASSEMBLY DOME S1000 SMALL

Insert two M K2 slot nuts in the rail and turn 90° clockwise until they lock. Then position the Dome S1000 small on the rail and fasten with two M8 x 25 Allen bolts and S8 locking washers.

Torque: 16 Nm

Materials required: Dome S1000 small, Allen bolt DIN 912 M8 x 20, S8 locking washers.



5
of 8

ASSEMBLY DOME SD SMALL

Insert one M K2 in the rail and turn 90° clockwise until locked. Then position the Dome SD small on to the rail and secure tightly with an M8 x 20 Allen bolt and S8 locking washer. The distance from the Dome SD small to the Dome S1000 small should be approximately equal to the width of the module + 50 mm.

Materials required: K2 SD Dome small



6
of 8

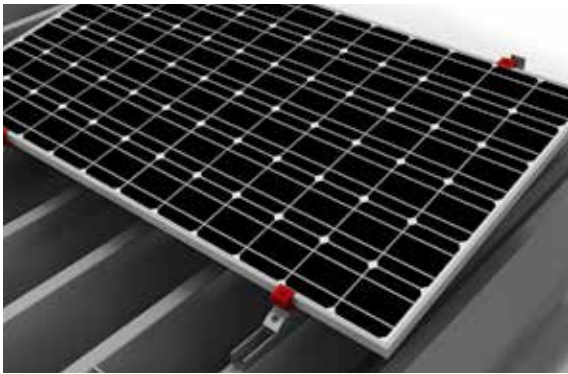
ASSEMBLY FLEXCLAMP SMALL

Insert the pre-assembled middle piece of the FlexClamp set into the channels of the domes and secure by tightening the bolt.

Torque: 14 Nm

Materials required: Dome S1000 small, Dome SD small, FlexClamp small set





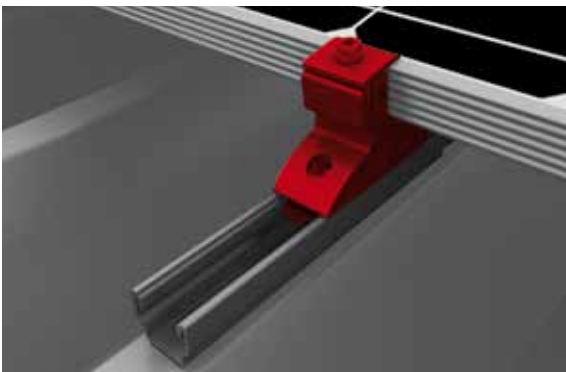
7
of 8

POSITIONING MODULES AND FASTENING DOME SD

First insert the module in horizontal position into the upper K2 FlexClamp small of the K2 Dome S 1000 small. Then insert the module into the lower K2 FlexClamp small of the K2 Dome SD. The top part of the FlexClamp has to be lifted then the module frame is inserted between the top and bottom part of the FlexClamp. Push the not yet fully fastened Dome SD small upwards towards the module until the FlexClamp small Set sits perfectly with the moduleframe and fasten the bolts.

Torque: 16 Nm

Materials required: Module



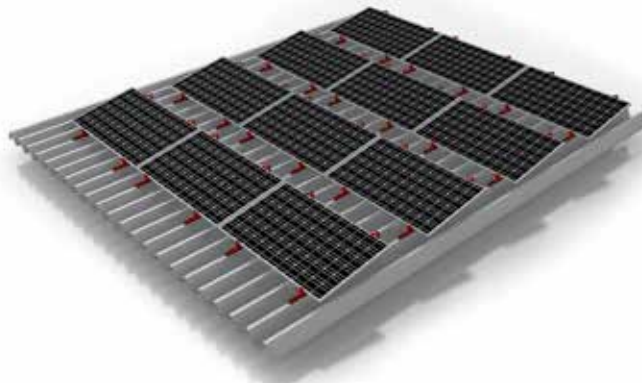
8
of 8

FASTENING THE MODULE

Fasten in the upper part of the FlexClamp small set onto its middle piece.

Torque: 14 Nm

Materials required: FlexClamp small set including Allen bolt M8 x 25 and S8 lock washer.



Ready!

THANK YOU FOR CHOOSING A K2 MOUNTING SYSTEM.

Systems from K2 Systems are fast and simple to install. We hope these instructions have helped you in this. Please contact us if you have any questions or suggestions for improvements. We are looking forward to receive your call on our

Service-Hotline +49 (0) 7152-3560-0

Our General Terms of Business apply. Please refer to <http://www.k2-systems.com/en/gsc.html>. German Law shall apply excluding the UN Convention on CISG. Place of venue is Stuttgart.

Mounting systems for solar technology



K2 Systems GmbH
Riedwiesenstraße 13 - 17
71229 Leonberg
Germany
Tel +49 (0) 7152 - 3560 - 0
Fax +49 (0) 7152 - 3560 - 179
info@k2-systems.com
www.k2-systems.com

Everest Solar Systems, LLC
3809 Ocean Ranch Blvd.
Suite 111
Oceanside, CA 92056
USA
Tel +1.760.301.5300
info@everest-solarsystems.com
www.everest-solarsystems.com

K2 Systems s.r.l.
Via Madonna dello Schioppo 67
Secondo Piano Int. 17-19
47521 Cesena (FC)
Italy
Tel. +39 0547 63 20 80
Fax +39 0547 63 50 22
info@k2-systems.it
www.k2-systems.it

K2 Systems SARL
19 Avenue du Pré de Challes
Parc des Glaisins
74940 Annecy le Vieux
France
Tel. +33 (0) 4 50 51 22 53
Fax +33 (0) 4 50 51 16 41
info@k2-systems.fr
www.k2-systems.fr

K2 Solar Mounting Solutions Ltd.
Unit 46 Easter Park
Benyon Road
Aldermaston, Berkshire RG 7 2PQ
United Kingdom
Tel. +44 (0) 1189 701280
info@k2-systems.uk.com
www.k2-systems.uk.com

Montageanleitung S-Dome Small | GB5 | 1013 | Subject to change.
Product illustrations are exemplary illustrations and may differ from the original.

