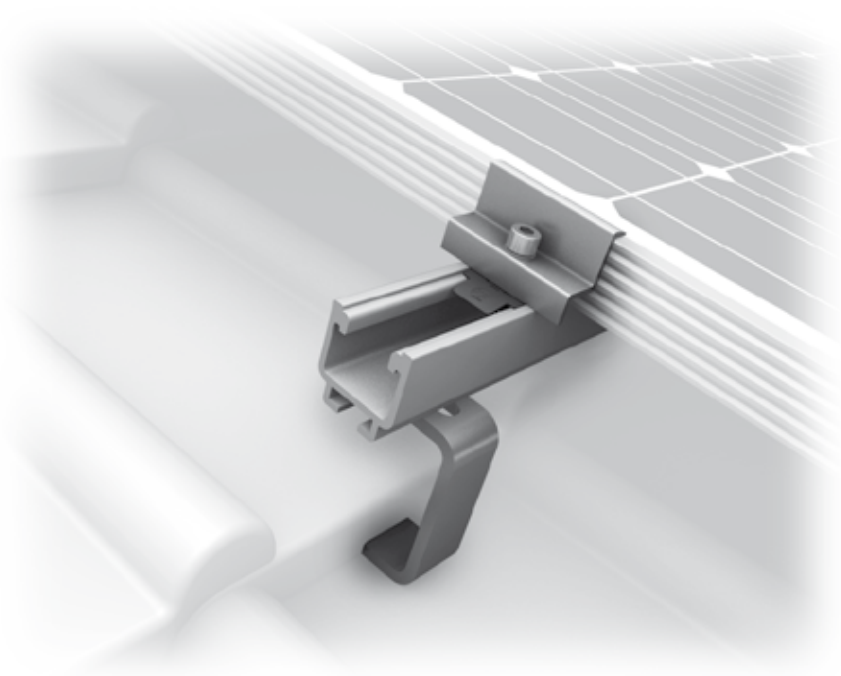


Mounting systems for solar technology



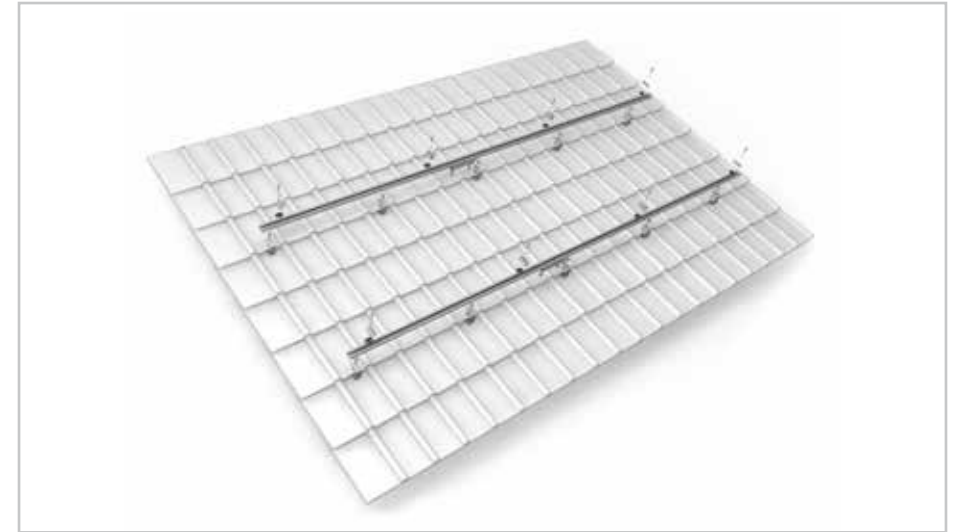
K2 SYSTEMS
SLOPED ROOF SYSTEMS
ROOF FASTENER SYSTEM SOLIDRAIL

ROOF FASTENER SYSTEM SOLIDRAIL

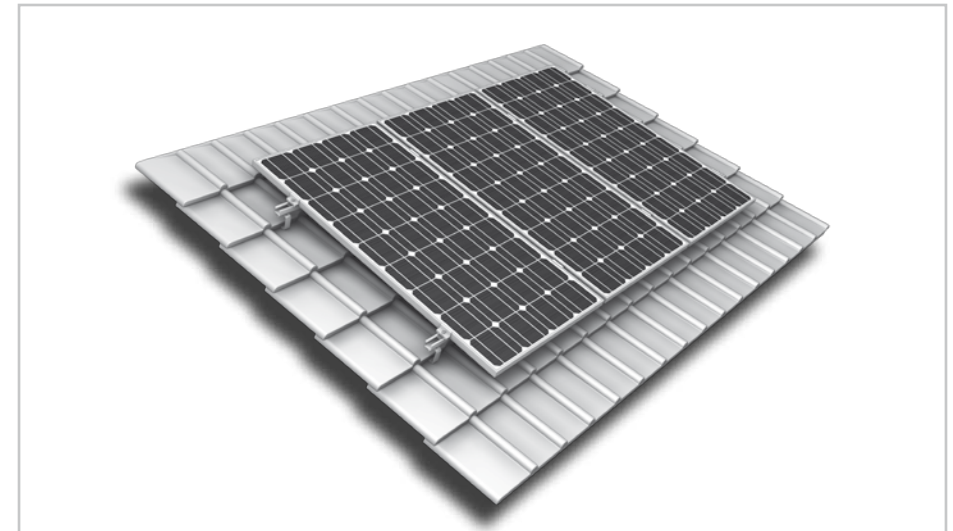
- K2 roof fasteners for pan tiled roofs
- Geometry optimised for K2 system components
- Excellent corrosion resistance thanks to use of high-quality aluminium alloys and stainless steel components
- Highly flexible due to adjustment of height under bracket (depending on type), roof fastener for almost any application
- Short assembly time thanks to simple system components
- Modular structure suitable for any system size
- Can also be installed in cross bracing (e.g. with K2 CrossRail)
- Static proven solution using the K2 Base Planning Software
- Cost-effective planning by large selection of rail types according to load and fixing situation

Technical data

Field of application	Sloped roof
Roofing	Pan tiled roofs
PV modules	Suitable for all standard module types
Module orientation	Vertical / horizontal (with cross bracing)
Material	Stainless steel
Connecting elements	Stainless steel A2-70
Roof connection	Screw connection
Static principles	Determination of load capacity values by independent testing institutes
Load assumption in accordance with	DIN 1055/ Eurocode 1
System components	K2 roof fasteners SolidRail family, T-bolts, K2 SolidRail range, rail connectors, middle and end clamp sets, M K2, K2 hexagon flange nut with serration



System Explosion drawing



System - Stainless steel roof fastener



Elpo | Pfunders - Italy

System: 484,65 kW | Vario 2 roof fastener with cross bracing



Elpo | Ehrenburg - Italy

System: 5,04 kW | Roof fastener system

SERVICE-HOTLINE
+49 (0)7152 3560-0
www.k2-systems.com

Produktblatt DH SR | GB3 | 0513 | Subject to change
Product illustrations are exemplary illustrations and may differ from the original.

